

Keystone RTA Range Hoods

Order Specification Sheet



KRH-2402 Range Hood shown in paint grade wood with Buttermilk finish and light brown Accent Glaze.



All Range Hoods are RTA and ship flat with the mantle portion pre-assembled to the face frame. Range hoods may be ordered with or without the doors. Doors ordered with the hood will ship not installed.

Keystone Range Hoods are ready-to-assemble units using CABINOTCH® cabinet boxes with Keystone value added doors and mantle components. They are available with any Keystone door style*. They may be ordered finished in any of our finishes and finish combinations, or unfinished ready for you to finish. We are also able to custom color match your order to your supplied sample. Range Hoods may be ordered full-cabinet as shown above, or face-frame-only (without the cabinet box).

Available wood species: Cherry, Clear Cherry, Hard Maple, Select Maple, Red Oak and Paint Grade. Other species may be available upon request. Call Customer Service.

An optional 4" high, 24 ga. **Brushed Stainless Steel Liner** is also available.

*Range hood doors may be ordered in any Keystone door style, but the smaller arch panels have limitations due to size and construction. See inside for more information.

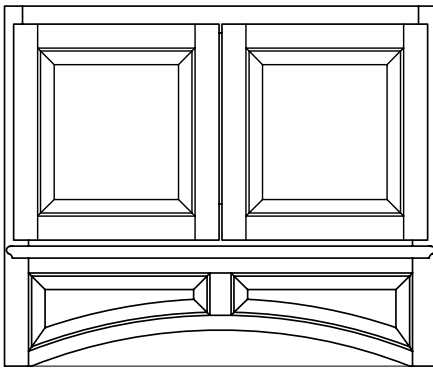
Phone: 1-800-233-0289

Fax: 1-800-253-0805



2225 Old Philadelphia Pike • PO Box 10127 • Lancaster, PA 17605-0127 • www.keystonewood.com

Keystone RTA Range Hoods



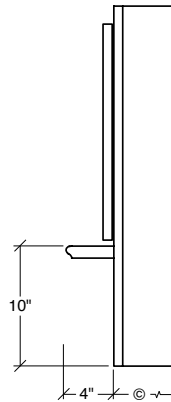
KRH-2201

(A) Standard widths: 30", 33", 36", 42", 48", 54", 60"

(B) Standard heights: 24", 30", 36", 42"

(C) Standard depths*: 18", 21"

Range hoods over 48" wide require three doors.



Panel Arch Options

Due to measurement constraints in making the panel arch for this model, not all framing beads and panel raises are available.

- Available framing beads: Traditional, Square, Classic, Ogee
- Available panel raises: Regular, Alpine, Short Alpine, Elite, Cove, Short Cove, Aspen, Slope, 1/4" Veneer MDF, Reverse Panel
- If the **range hood doors** are ordered different from the above specifications, the arch panels will be made flat. Please see note below.**

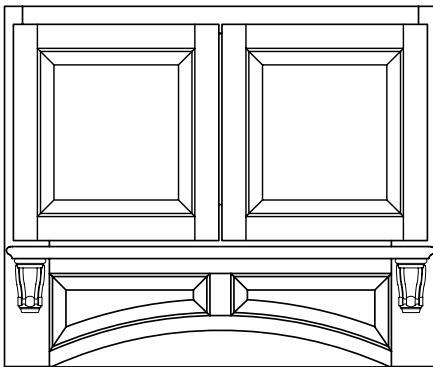
Operable doors allow easy access to mechanicals (hinged in the center, 1/4" reveal between the doors).

Display shelf is 1" thick x 4" deep, and is pre-assembled to the face frame.

Face Frame

- Outside left and right reveals are 3/4".
- Top reveal may be adjusted to match adjoining cabinets. Please specify.
- Top rail is 2 1/4".

Custom sizes available. Call Customer Service.



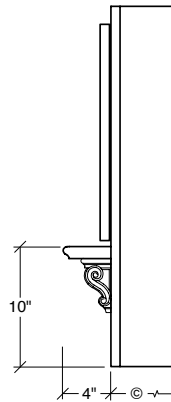
KRH-2202

(A) Standard widths: 30", 33", 36", 42", 48", 54", 60"

(B) Standard heights: 24", 30", 36", 42"

(C) Standard depths*: 18", 21"

Range hoods over 48" wide require three doors.



Panel Arch Options

Due to measurement constraints in making the panel arch for this model, not all framing beads and panel raises are available.

- Available framing beads: Traditional, Square, Classic, Ogee
- Available panel raises: Regular, Alpine, Short Alpine, Elite, Cove, Short Cove, Aspen, Slope, 1/4" Veneer MDF, Reverse Panel
- If the **range hood doors** are ordered different from the above specifications, the arch panels will be made flat. Please see note below.**

Operable doors allow easy access to mechanicals (hinged in the center, 1/4" reveal between the doors).

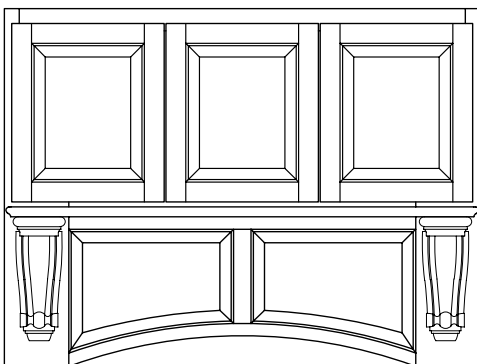
Display Mantle:

- The shelf is 1" thick x 4" deep, and is pre-assembled to the face frame.
- Available corbels are White River CRV5108, CRV5267, and CRV5288
- **For the CRV5108 (Mission style) Corbel, the shelf will be 5" deep.**
- Corbels are also pre-assembled to the face frame.

Face Frame

- Outside left and right reveals are 3/4".
- Top reveal may be adjusted to match adjoining cabinets. Please specify.
- Top rail is 2 1/4".

Custom sizes available. Call Customer Service.



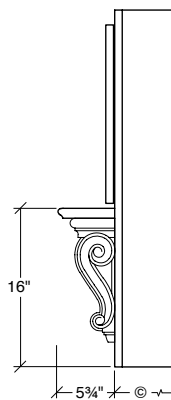
KRH-2203

(A) Recommended widths: 48", 54", 60"

(B) Standard heights: 30", 36", 42"

(C) Standard depths*: 18", 21"

Range hoods over 48" wide require three doors.



Panel Arch Options

Due to the size of the arch on this model, there are no restrictions on panel raises.

- Available framing beads: Traditional, Square, Classic, Ogee

Range hood door panels and arch panels will match.

Operable doors allow easy access to mechanicals (hinged on the outside with the center door hinged on the left, 1/2" reveal between the doors).

Display Mantle:

- The shelf is 1" thick x 5 3/4" deep, and is pre-assembled to the face frame.
- Available corbels are White River CRV5103, CRV5105, and CRV5098
- Corbels are also pre-assembled to the face frame.

Face Frame

- Outside left and right reveals are 3/4".
- Top reveal may be adjusted to match adjoining cabinets. Please specify.
- Top rail is 2 1/4".

Custom sizes available. Call Customer Service.

***NOTE:** the depth dimension (C) measures from the back of the cabinet to the front of the face frame ONLY. It does not include the doors or mantle parts.

****Range hood doors may be ordered in any Keystone door style, but arch panels have limitations due to the confines of size and construction. Typically, for hoods where doors do not match the specifications above, the arch panels will be made flat. However, if you would like to order the arch panels differently from the doors, please call Customer Service for assistance.**

Panel Arch Options

Due to measurement constraints in making the panel arch for this model, not all framing beads and panel raises are available.

- Available framing beads: Traditional, Square, Classic, Ogee
- Available panel raises: Regular, Alpine, Short Alpine, Elite, Cove, Short Cove, Aspen, Slope, 1/4" Veneer MDF, Reverse Panel
- If the **range hood doors** are ordered different from the above specifications, the arch panels will be made flat. Please see note below.**

Operable doors allow easy access to mechanicals (hinged on the outside, 1/8" reveal between the doors).

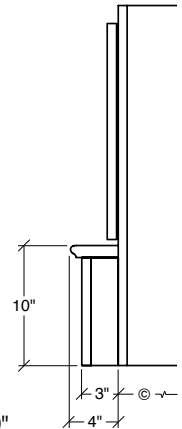
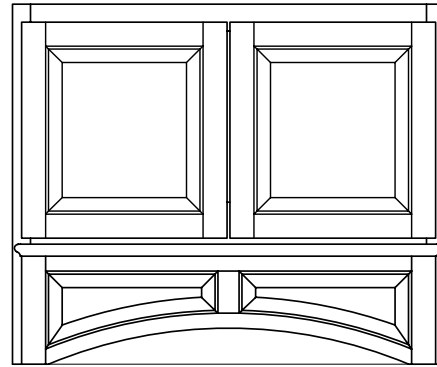
Display Mantle with Valance:

- The shelf is 1" thick x 4" deep.
- The shelf and valance are pre-assembled to the face frame.

Face Frame

- Outside left and right reveals are 3/4".
- Top reveal may be adjusted to match adjoining cabinets. Please specify.
- Top rail is 2 1/4".

Custom sizes available. Call Customer Service.



KRH-2401

- (A) Standard widths: 30", 33", 36", 42", 48", 54", 60"
- (B) Standard heights: 24", 30", 36", 42"
- (C) Standard depths*: 18", 21"

Range hoods over 48" wide require three doors.

Panel Arch Options

Due to measurement constraints in making the panel arch for this model, not all framing beads and panel raises are available.

- Available framing beads: Traditional, Square, Classic, Ogee
- Available panel raises: Regular, Alpine, Short Alpine, Elite, Cove, Short Cove, Aspen, Slope, 1/4" Veneer MDF, Reverse Panel
- If the **range hood doors** are ordered different from the above specifications, the arch panels will be made flat. Please see note below.**

Operable doors allow easy access to mechanicals (hinged on the outside, 1/8" reveal between the doors).

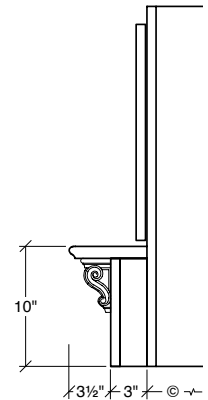
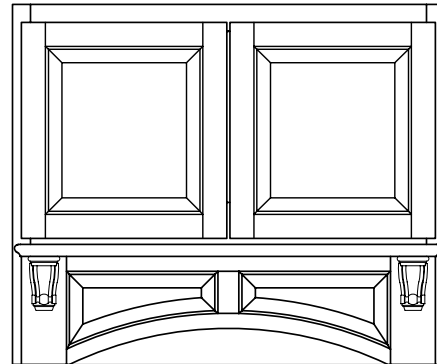
Display Mantle with Valance:

- The shelf is 1" thick x 6 1/2" deep, and is pre-assembled to the face frame.
- Available corbels are White River CRV5108, CRV5267, and CRV5288
- **For the CRV5108 (Mission style) Corbel, the shelf will be 7 1/2" deep.**
- Corbels are also pre-assembled to the face frame.

Face Frame

- Outside left and right reveals are 3/4".
- Top reveal may be adjusted to match adjoining cabinets. Please specify.
- Top rail is 2 1/4".

Custom sizes available. Call Customer Service.



KRH-2402

- (A) Standard widths: 30", 33", 36", 42", 48", 54", 60"
- (B) Standard heights: 24", 30", 36", 42"
- (C) Standard depths*: 18", 21"

Range hoods over 48" wide require three doors.

Operable doors allow easy access to mechanicals (hinged on the outside, 1/8" reveal between the doors).

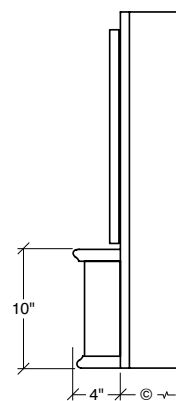
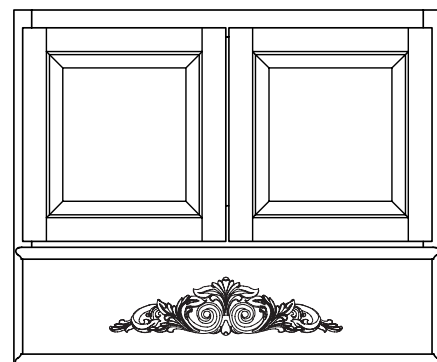
Display Mantle with Straight Valance:

- The shelf is 1" thick x 4" deep.
- Bottom moulding matches the shelf profile.
- Available with or without the acanthus scroll.
- The shelf, valance and onlay are all pre-assembled to the face frame.

Face Frame

- Outside left and right reveals are 3/4".
- Top reveal may be adjusted to match adjoining cabinets. Please specify.
- Top rail is 2 1/4".

Custom sizes available. Call Customer Service.



KRH-2403 (includes acanthus scroll)

- (A) Standard widths: 30", 33", 36", 42", 48", 54", 60"
- (B) Standard heights: 24", 30", 36", 42"
- (C) Standard depths*: 18", 21"

Range hoods over 48" wide require three doors.

This hood may also be ordered without the scroll.

IMPORTANT: Please consult you local building codes and ordinances before ordering.

Please call our **Customer Service Department** with questions. **800-233-0289**.

Phone: 1-800-233-0289

Fax: 1-800-253-0805



2225 Old Philadelphia Pike • PO Box 10127 • Lancaster, PA 17605-0127 • www.keystonewood.com