



RTA Cabinet Order Form

PO Box 10127
2225 Old Philadelphia Pike
Lancaster, PA 17605-0127

Phone 800-233-0289
FAX 800-253-0805

- ORDER PENDING
 ORDER RELEASED FOR PRODUCTION
 QUOTATION

To order using a Credit Card, please contact our Customer Service Department.

P.O.# _____ JOB # _____
 ORDERED BY _____ ORDER DATE _____
 CO. NAME _____
 ADDRESS _____
 ADDRESS _____
 CITY _____ STATE _____ ZIP _____
 PHONE # _____ FAX # _____
 Email Address _____

Overall Job Specs

FACE FRAME WOOD SPECIES: _____ FACE FRAME FINISH: _____ **OR** POLISH SAND ONLY

FACE FRAME: OVERLAY SQUARE INSET BEADED INSET — circle bead size: 3/16" 1/4" 3/8"

Available Cabinets

BC
BASE CABINET



THIS IS A FULL-HEIGHT BASE CABINET WITH NO DRAWERS. AVAILABLE WITH ADJUSTABLE SHELVES.

BCD1
BASE CABINET, 1 DRAWER



THIS IS A FULL-HEIGHT BASE CABINET WITH ONE 5" STANDARD HEIGHT DRAWER OPENING. (**SPECIFY HEIGHT IF DIFFERENT**). AVAILABLE WITH **ONE** ADJUSTABLE SHELF.

UC
UPPER CABINET



THIS IS AN UPPER CABINET. AVAILABLE WITH **UP TO SIX** ADJUSTABLE SHELVES.

T56
TALL CABINET, FIXED LOWER 56"



THIS TALL CABINET HAS A FIXED LOWER OPENING OF 56 INCHES. TOP OPENING IS VARIABLE. AVAILABLE WITH **UP TO FIVE** ADJUSTABLE SHELVES.

Cabinet 1

CABINET NAME (BC, BCD1, UC, or T56)	WIDTH	HEIGHT	DEPTH	FLUSH FINISHED ENDS (Left, Right, Both)	ADJUSTABLE SHELVES (QTY)	BCD1 DRAWER OPENING HEIGHT	TOE KICK HEIGHT

INTERIOR WOOD (choose one):

- UV PureBond® PRE-FINISHED MAPLE (standard) MATCHING THE FACE FRAME, FINISHED (up charge) MATCHING THE FACE FRAME, UNFINISHED (up charge)

CUSTOM STILE OPTIONS (the standard will be used if nothing is checked):

LEFT RIGHT

- STANDARD: 1 1/2" standard stile with 1/4" scribe
 3/4" SCRIBE: 1 1/2" standard stile with 3/4" scribe
 3" STILE: 3" stile with 2 1/4" scribe

LEFT RIGHT

- 5 1/2" STILE: 5 1/2" stile with 3 3/4" scribe
 EXTENDED: stile extended 4" to the floor

CUSTOM RAIL OPTIONS:

- STANDARD 1 1/2" BOTTOM RAIL (standard will be used if nothing is checked)
 5 1/2" BOTTOM RAIL: no toe for base cabinets (applies to BC, BCD1, T56)
 2 1/4" BOTTOM RAIL: bottom scribe 1 5/8" for wall cabinets (applies to UC)

Cabinet 2

CABINET NAME (BC, BCD1, UC, or T56)	WIDTH	HEIGHT	DEPTH	FLUSH FINISHED ENDS (Left, Right, Both)	ADJUSTABLE SHELVES (QTY)	BCD1 DRAWER OPENING HEIGHT	TOE KICK HEIGHT

INTERIOR WOOD (choose one):

- UV PureBond® PRE-FINISHED MAPLE (standard) MATCHING THE FACE FRAME, FINISHED (up charge) MATCHING THE FACE FRAME, UNFINISHED (up charge)

CUSTOM STILE OPTIONS (the standard will be used if nothing is checked):

LEFT RIGHT

- STANDARD: 1 1/2" standard stile with 1/4" scribe
 3/4" SCRIBE: 1 1/2" standard stile with 3/4" scribe
 3" STILE: 3" stile with 2 1/4" scribe

LEFT RIGHT

- 5 1/2" STILE: 5 1/2" stile with 3 3/4" scribe
 EXTENDED: stile extended 4" to the floor

CUSTOM RAIL OPTIONS:

- STANDARD 1 1/2" BOTTOM RAIL (standard will be used if nothing is checked)
 5 1/2" BOTTOM RAIL: no toe for base cabinets (applies to BC, BCD1, T56)
 2 1/4" BOTTOM RAIL: bottom scribe 1 5/8" for wall cabinets (applies to UC)

Cabinet 3

CABINET NAME (BC, BCD1, UC, or T56)	WIDTH	HEIGHT	DEPTH	FLUSH FINISHED ENDS (Left, Right, Both)	ADJUSTABLE SHELVES (QTY)	BCD1 DRAWER OPENING HEIGHT	TOE KICK HEIGHT

INTERIOR WOOD (choose one):

- UV PureBond® PRE-FINISHED MAPLE (standard) MATCHING THE FACE FRAME, FINISHED (up charge) MATCHING THE FACE FRAME, UNFINISHED (up charge)

CUSTOM STILE OPTIONS (the standard will be used if nothing is checked):

LEFT RIGHT

- STANDARD: 1 1/2" standard stile with 1/4" scribe
 3/4" SCRIBE: 1 1/2" standard stile with 3/4" scribe
 3" STILE: 3" stile with 2 1/4" scribe

LEFT RIGHT

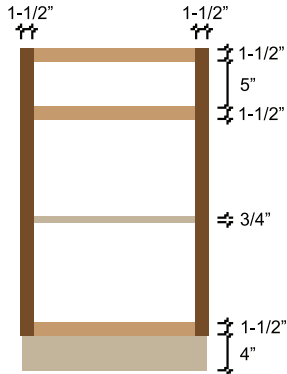
- 5 1/2" STILE: 5 1/2" stile with 3 3/4" scribe
 EXTENDED: stile extended 4" to the floor

CUSTOM RAIL OPTIONS:

- STANDARD 1 1/2" BOTTOM RAIL (standard will be used if nothing is checked)
 5 1/2" BOTTOM RAIL: no toe for base cabinets (applies to BC, BCD1, T56)
 2 1/4" BOTTOM RAIL: bottom scribe 1 5/8" for wall cabinets (applies to UC)

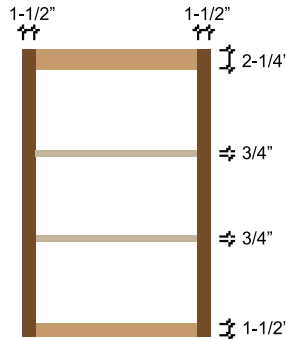


Cabinotch® Cabinet Box Specifications



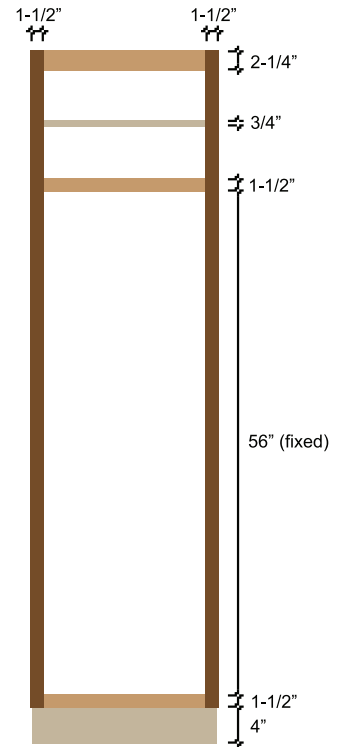
BC & BCD1 Base Cabinets:

- 1.5" All Rails and Stiles
- 5" Standard Top Drawer Opening Height
(Specify if you need a different height.)
- 4" Toe Height
- 3" Toe Depth
- 0.75" Shelves
- Total cabinet height includes toe.



UC Upper Cabinet:

- 2.25" Top Rail
- 1.5" Stiles and Bottom Rail
- 0.25" Outside Scribe
- 1.69" Top Scribe
- 0.935" Bottom Scribe
- 0.75" Shelves (up to 6)



T56 Tall Cabinet:

- 2.25" Top Rails
- 1.5" Stiles, Mid & Bottom Rails
- 4" Toe Height
- 3" Toe Depth
- 0.75" Shelves (up to 5)
- Upper Opening is variable
- Total cabinet height includes toe.

General Information

- Cabinets are available in .001" increments.
- Choose either pre-finished maple UV interior, or unfinished interior to match wood species of the face frame.
- Side, top and back panels are 1/2" PureBond® plywood.
- Cabinet box plywood is light color domestic hardwood unless otherwise specified.
- Back panel is flush with the side panels.
- Shelves are 3/4" thick plywood, full depth and adjustable.
- Shelves are sized 1/8" less than the total inside width for easy adjustment.
- Cabinets with shelves have the side panels bored for 5mm shelf pins on 32mm centers (pins not included)
- Face frames are available in the following wood species:

Alder	Poplar
Cherry	Walnut
Hickory	White Oak
Hard Maple	Soft Maple
Red oak	
- Face frames are wide belt sanded to 220 grit (palm sanding recommended before finishing).
- All stiles, mid and bottom rails are 1 1/2" wide, 3/4" thick solid wood.
- All wall and tall cabinets have 2 1/4" wide, 3/4" thick solid wood top rails.
- 1/4" outside scribe included on all frames.
- Toe kick is 4" high by 3" deep.

Add Keystone Doors, Drawers and Moulding

Keystone products are available for your cabinets, and may be ordered separately.

ORDER / QUOTE FORMS



PO Box 10127
2225 Old Philadelphia Pike
Lancaster, PA 17605-0127

Phone 800-233-0289
Email info@keystonewood.com
www.keystonewood.com

Feel free to make as many copies as you need for ordering or quoting.

Submitting multiple pages and multiple forms:

Please be sure that your name and the name of your company appear on EACH page of EACH form and number each page (page 1 of 3, page 2 of 3, page 3 of 3, etc.) in the space provided at the top of each form. This will help us process your order or quote quickly.

Download PDF versions of these forms at our web site: keystonewood.com/resources/order-forms-downloads

Terms & Conditions of Sale

All sales by Keystone Wood Specialties Inc. (herein called Keystone) are subject to the following terms and conditions.

1. Keystone shall not be liable for any delay in performance or failure to perform if the delay or failure is caused by an event beyond its reasonable control.
2. Due to the custom nature of the orders placed with Keystone, shipping dates on invoices are only approximate shipping dates. While every effort will be made to meet a customer's delivery date, delivery on a specific day cannot be guaranteed.
3. Keystone retains a security interest in all goods shipped to customer until payment in full has been received.
4. Claims for shortages or damaged merchandise must be made within 10 days after merchandise is received. Repack damaged merchandise in ORIGINAL cartons and contact Keystone for instructions.
5. The customer shall notify Keystone immediately on receipt of any nonconforming goods, whereupon Keystone shall, at its option, either repair the goods, replace the goods, or give the customer a credit for the price of the goods. The customer's repair of goods without Keystone's express approval constitutes acceptance of the goods as if they were conforming, and Keystone is not liable for the expense of the repair.
6. Orders for custom made goods cannot be cancelled or changed after order is placed into production. Custom made goods cannot be returned. Other goods can be returned only at customer's expense and with Keystone's express approval. When goods are returned with such approval, Keystone will give the customer credit for the price of the goods less a restocking charge of 25%.
7. All orders are shipped prepaid by credit card unless approved for Open Account or C.O.D. Open Accounts are paid according to invoice terms. Deposits may be required for larger orders. Trade discounts are applied only to discountable products when orders are paid within 60 days. (See page 5 of the Price Catalog.)
8. Beginning December 1, 2022, we will impose a 2.85% surcharge on all Credit Card Transactions, which is not greater than our cost of acceptance. A surcharge will not be applied to any debit card transactions.
9. When placing an order on COD, Open Account, or any other terms, customer agrees in addition to any other liability to pay Keystone on demand all costs and expenses (including reasonable attorney's fees and legal expenses) which may be incurred in the enforcement of customer's liabilities to Keystone.
10. The customer's remedies set out in these terms and conditions are the customer's exclusive remedies, and under no circumstances shall Keystone be liable for any labor claims or for any other special, incidental, or consequential damages arising out of goods or a delay in the delivery of goods.

FAX: 717-299-9654 or 800-253-0805

EMAIL: info@keystonewood.com