



PO Box 10127  
2225 Old Philadelphia Pike  
Lancaster, PA 17605-0127

ORDER  
 QUOTE

Phone 888-825-3269  
FAX 800-253-0805

VISA  MASTERCARD  AMEX  DISCOVER

CARD # \_\_\_\_\_ EXP. DATE \_\_\_\_\_

NAME ON CARD \_\_\_\_\_

SIGNATURE \_\_\_\_\_

# RTA Cabinet Order Form

P.O.# \_\_\_\_\_ JOB # \_\_\_\_\_

ORDERED BY \_\_\_\_\_ ORDER DATE \_\_\_\_\_

CO. NAME \_\_\_\_\_

ADDRESS \_\_\_\_\_

ADDRESS \_\_\_\_\_

CITY \_\_\_\_\_ STATE \_\_\_\_\_ ZIP \_\_\_\_\_

PHONE # \_\_\_\_\_ FAX # \_\_\_\_\_

Email Address \_\_\_\_\_

Order Keystone doors, drawers boxes, drawer fronts, moulding, etc. separately using order forms available on our website or from Customer Service.

## Overall Job Specs

FACE FRAME WOOD SPECIES: \_\_\_\_\_ FACE FRAME FINISH: \_\_\_\_\_ **OR**  POLISH SAND ONLY

FACE FRAME:  OVERLAY  SQUARE INSET  BEADED INSET — circle bead size: 3/16" 1/4" 3/8"

## Available Cabinets

**BC**  
BASE CABINET



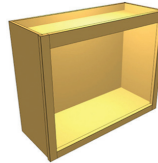
THIS IS A FULL-HEIGHT BASE CABINET WITH NO DRAWERS. AVAILABLE WITH ADJUSTABLE SHELVES.

**BCD1**  
BASE CABINET, 1 DRAWER



THIS IS A FULL-HEIGHT BASE CABINET WITH ONE 5" STANDARD HEIGHT DRAWER OPENING. (**SPECIFY HEIGHT IF DIFFERENT**). AVAILABLE WITH **ONE** ADJUSTABLE SHELF.

**UC**  
UPPER CABINET



THIS IS AN UPPER CABINET. AVAILABLE WITH **UP TO SIX** ADJUSTABLE SHELVES.

**T56**  
TALL CABINET, FIXED LOWER 56"



THIS TALL CABINET HAS A FIXED LOWER OPENING OF 56 INCHES. TOP OPENING IS VARIABLE. AVAILABLE WITH **UP TO FIVE** ADJUSTABLE SHELVES.

Cabinet 1

CABINET NAME (BC, BCD1, UC, or T56)	WIDTH	HEIGHT	DEPTH	FLUSH FINISHED ENDS (Left, Right, Both)	ADJUSTABLE SHELVES (QTY)	BCD1 DRAWER OPENING HEIGHT	TOE KICK HEIGHT

INTERIOR WOOD (choose one):

UV PureBond® PRE-FINISHED MAPLE (standard)  MATCHING THE FACE FRAME, FINISHED (up charge)  MATCHING THE FACE FRAME, UNFINISHED (up charge)

CUSTOM STILE OPTIONS (the standard will be used if nothing is checked):

LEFT RIGHT

STANDARD: 1 1/2" standard stile with 1/4" scribe  5 1/2" STILE: 5 1/2" stile with 3 3/4" scribe

3/4" SCRIBE: 1 1/2" standard stile with 3/4" scribe  EXTENDED: stile extended 4" to the floor

3" STILE: 3" stile with 2 1/4" scribe

CUSTOM RAIL OPTIONS:

STANDARD 1 1/2" BOTTOM RAIL (standard will be used if nothing is checked)

5 1/2" BOTTOM RAIL: no toe for base cabinets (applies to BC, BCD1, T56)

2 1/4" BOTTOM RAIL: bottom scribe 1 5/8" for wall cabinets (applies to UC)

Cabinet 2

CABINET NAME (BC, BCD1, UC, or T56)	WIDTH	HEIGHT	DEPTH	FLUSH FINISHED ENDS (Left, Right, Both)	ADJUSTABLE SHELVES (QTY)	BCD1 DRAWER OPENING HEIGHT	TOE KICK HEIGHT

INTERIOR WOOD (choose one):

UV PureBond® PRE-FINISHED MAPLE (standard)  MATCHING THE FACE FRAME, FINISHED (up charge)  MATCHING THE FACE FRAME, UNFINISHED (up charge)

CUSTOM STILE OPTIONS (the standard will be used if nothing is checked):

LEFT RIGHT

STANDARD: 1 1/2" standard stile with 1/4" scribe  5 1/2" STILE: 5 1/2" stile with 3 3/4" scribe

3/4" SCRIBE: 1 1/2" standard stile with 3/4" scribe  EXTENDED: stile extended 4" to the floor

3" STILE: 3" stile with 2 1/4" scribe

CUSTOM RAIL OPTIONS:

STANDARD 1 1/2" BOTTOM RAIL (standard will be used if nothing is checked)

5 1/2" BOTTOM RAIL: no toe for base cabinets (applies to BC, BCD1, T56)

2 1/4" BOTTOM RAIL: bottom scribe 1 5/8" for wall cabinets (applies to UC)

Cabinet 3

CABINET NAME (BC, BCD1, UC, or T56)	WIDTH	HEIGHT	DEPTH	FLUSH FINISHED ENDS (Left, Right, Both)	ADJUSTABLE SHELVES (QTY)	BCD1 DRAWER OPENING HEIGHT	TOE KICK HEIGHT

INTERIOR WOOD (choose one):

UV PureBond® PRE-FINISHED MAPLE (standard)  MATCHING THE FACE FRAME, FINISHED (up charge)  MATCHING THE FACE FRAME, UNFINISHED (up charge)

CUSTOM STILE OPTIONS (the standard will be used if nothing is checked):

LEFT RIGHT

STANDARD: 1 1/2" standard stile with 1/4" scribe  5 1/2" STILE: 5 1/2" stile with 3 3/4" scribe

3/4" SCRIBE: 1 1/2" standard stile with 3/4" scribe  EXTENDED: stile extended 4" to the floor

3" STILE: 3" stile with 2 1/4" scribe

CUSTOM RAIL OPTIONS:

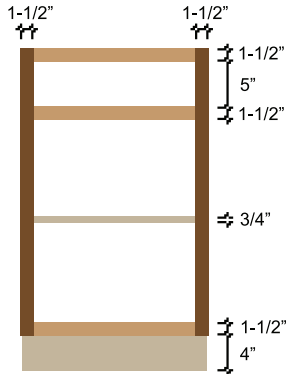
STANDARD 1 1/2" BOTTOM RAIL (standard will be used if nothing is checked)

5 1/2" BOTTOM RAIL: no toe for base cabinets (applies to BC, BCD1, T56)

2 1/4" BOTTOM RAIL: bottom scribe 1 5/8" for wall cabinets (applies to UC)

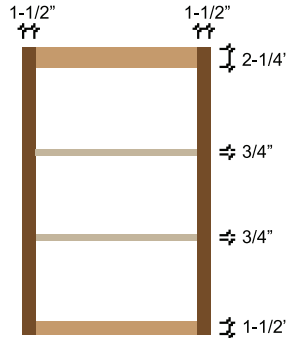


## Cabinotch® Cabinet Box Specifications



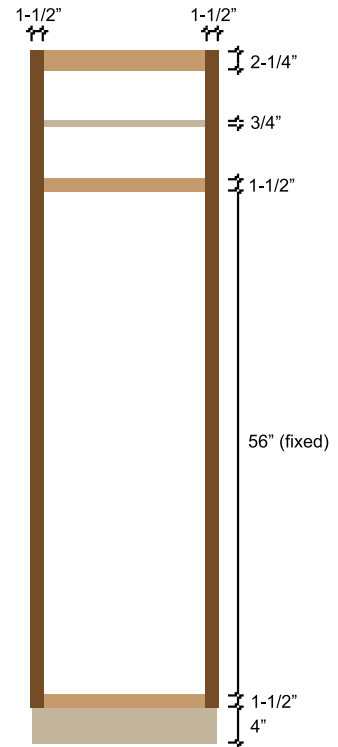
**BC & BCD1 Base Cabinets:**

- 1.5" All Rails and Stiles
- 5" Standard Top Drawer Opening Height  
(Specify if you need a different height.)
- 4" Toe Height
- 3" Toe Depth
- 0.75" Shelves
- Total cabinet height includes toe.



**UC Upper Cabinet:**

- 2.25" Top Rail
- 1.5" Stiles and Bottom Rail
- 0.25" Outside Scribe
- 1.69" Top Scribe
- 0.935" Bottom Scribe
- 0.75" Shelves (up to 6)



**T56 Tall Cabinet:**

- 2.25" Top Rails
- 1.5" Stiles, Mid & Bottom Rails
- 4" Toe Height
- 3" Toe Depth
- 0.75" Shelves (up to 5)
- Upper Opening is variable
- Total cabinet height includes toe.

## General Information

- Cabinets are available in .001" increments.
- Choose either pre-finished maple UV interior, or unfinished interior to match wood species of the face frame.
- Side, top and back panels are 1/2" PureBond® plywood.
- Cabinet box plywood is light color domestic hardwood unless otherwise specified.
- Back panel is flush with the side panels.
- Shelves are 3/4" thick plywood, full depth and adjustable.
- Shelves are sized 1/8" less than the total inside width for easy adjustment.
- Cabinets with shelves have the side panels bored for 5mm shelf pins on 32mm centers (pins not included)
- Face frames are available in the following wood species:
 

Alder	Poplar
Cherry	Walnut
Hickory	White Oak
Hard Maple	Soft Maple
Red oak	
- Face frames are wide belt sanded to 220 grit (palm sanding recommended before finishing).
- All stiles, mid and bottom rails are 1 1/2" wide, 3/4" thick solid wood.
- All wall and tall cabinets have 2 1/4" wide, 3/4" thick solid wood top rails.
- 1/4" outside scribe included on all frames.
- Toe kick is 4" high by 3" deep.

## Add Keystone Doors, Drawers and Moulding

Keystone products are available for your cabinets, and may be ordered separately.